



Cooking demonstrations

Need some hints on haute cuisine? Keen to find out a few tricks of the trade? Join celebrated chefs as they whip up a storm in the Neff Kitchen.

'Neff in the Kitchen' Lyn Harwood & Michelle Edwards, home economists

Jo Richardson, food stylist

Nicky Riemer, Union Dining

Shane Delia, Maha & St Katherine's



Lyn Harwood & Michelle Edwards

Jo Richardson

Nicky Riemer

Shane Delia

Entertainment on stage

Sit, sip and toe-tap to live music and dance throughout the day.

- 9am** Giggly Kids
- 11am** B# Big Band, with a swing dance class
- 1.30pm** 100% Kylie
- 2.45pm** Combo la Revelacion
- 3.30pm** Copacabana Brazilian floor show
- 3.45pm** Combo la Revelacion

Activities and competitions

Kid's Cupcake Competition

Calling all kids... grab your apron, dust off your recipe book and get baking! We invite you to make, bake, and decorate four cupcakes at home, and bring them along to the Harvest Picnic to be judged. Great prizes to be won.

Cherry Pip Competition

The Victorian Cherry Association invites you to spit your pip, with a cherry red Kitchen Aid up for grabs.

Sign up to win prizes

Sign up to our email database and receive regular updates on Harvest Picnic events. Better still, look for us on Facebook and Twitter and go in the running to win great prizes.

Contact us

Harvest Picnic Foundation Limited
PO Box 321 Hampton Victoria 3188
T. 03 9521 8844
www.harvestpicnic.com.au

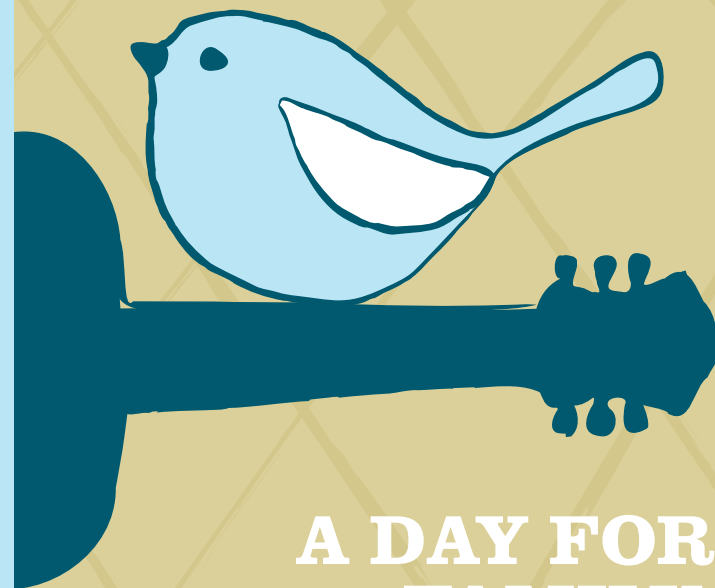
How to get there



proudly supported by



Details correct at time of printing 10/11.



A DAY FOR FAMILY, FRIENDS & FOOD LOVERS!

9AM-5PM SUN 27 NOVEMBER 2011



Will it be freshly churned honey and walnut ice cream, yabby and scallop pie or the biggest barbecued mushroom you've ever eaten? With over 100 small producers from across the state gathering at Werribee Park to showcase, sample and sell their delicious provisions, there's no shortage of choice. You'll find mouth-watering cherries and berries, extra virgin olive oils, jams, relishes, and an abundance of sweet treats. Artisan breads and cheeses, crispy calamari and all things organic perfectly complemented with craft-brewed ales and ciders, boutique wines and locally roasted coffee.

The Age Harvest Picnic at Werribee Park truly is a celebration of Victoria's bountiful harvest.

Sip and savour your way round every marquee or roll out your picnic rug on the great lawn with family and friends while performers take centre stage. Relax while the kids are having fun enjoying free activities including painting, face painting and asparagus bunching.

What shall I bring?

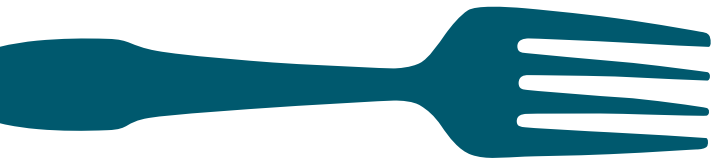
A picnic rug or chair, sun hat or shade umbrella, sunscreen, a good appetite, and a bag to take home your gourmet goodies. If it's drizzling, pack an umbrella. It won't rain for long anyway.

How do I get there?

By car: Werribee Park is 30 minutes from Melbourne. Take exit C108 off the Princes Freeway then follow the signs to Werribee Park (Melway page 201 B4). On-site car parking is free.

Coach transport: Departs outside the Arts Centre at 9am and 10am; the return bus will depart from Werribee Park at 5pm. Return travel costs \$35 including event entry ticket. Advance bookings only through Melbourne on the Move: 1300 55 86 86 or www.melbourneonthemove.com.au.

Train and shuttle bus: A shuttle bus will meet the incoming trains and will depart Werribee Station at approximately 9.20am, 10am, 10.40am, 11.20am and 11.40am. A shuttle bus will depart Werribee Park at 3.30pm, 4.15pm and 5pm to meet the outgoing trains from Werribee Station. Cost: \$5 per person each way.



ADVANCE TICKETS

Plan ahead and save on the ticket price by buying tickets online at www.harvestpicnic.com.au

Adults.....	\$20
Concession.....	\$15
Group tickets (ten or more people).....	\$15
Children under 15.....	Free

Tickets

Ticket entry includes access to The Age Harvest Picnic at Werribee Park, Werribee Mansion, the Victoria State Rose Garden, entertainment, Neff cooking demonstrations, car parking, and a copy of The Sunday Age (to be collected at the picnic).

Win a Neff Slide and Hide Oven

Buy your tickets online before 5pm, Friday 25 November 2011 and you will go in the draw to win the latest Neff Slide and Hide Plus Vario Steam Oven, valued at \$3,799. The competition will be drawn and the winner announced at 10.30am in the Neff Cooking Demonstration Marquee at the picnic. *See website for full terms and conditions.

Group bookings

Get in early and save on group bookings of 10 or more. Tickets must be purchased in advance.

At the gate

There are limited tickets available at the gate. They are \$5 more expensive per ticket and there may be queues. We advise you to plan ahead, save time and money and buy tickets in advance. And remember, no group tickets at the gate. Buy tickets at the gate on the day using cash or credit card. Please note that there are no ATM facilities at the picnic.

Adults.....	\$25
Concession.....	\$20
Children under 15.....	Free

CHRISTMAS PARTIES

Treat your staff, clients, family or friends to a private marquee set amidst the magnificence of Werribee Park. Private function marquees are available for the first time this year.

Exhibitors

- 12 Apostles Food Group
- 180 Degrees C Cupcakes
- Apostle Whey Cheese
- Aromatics – Discover a World of Spices
- Auldstone Cellars
- Auntie Elda's Falafel
- Australian Asparagus Council
- Australian Blueberries
- Australian Mushroom Growers
- Barfold Estate
- Barfold Olives
- Beechworth Honey
- Berrys Creek Gourmet Cheese
- Birubi Foods
- Boat O'Craigo Wines
- Boggy Creek Wines
- Brown Brothers
- Brussels Belgian Waffles
- Buller Wines
- C4 Coffee
- Campbells Wines
- Copacabana International
- Country Fire Authority
- D'Angelo Wines
- Daylesford and Hepburn Mineral Springs Co.
- Food Symphony
- Galli Estate Winery
- Gourmet Curry Hut
- Grand Ridge Brewery
- Gundwring Ice Cream
- Heytesbury Ridge Winery
- Himalayan Sherpa
- Irrewarra Natural Icecream
- Jamies Fine Dressings
- Joseph's Restaurant
- Kalaparee Olives
- Kennedy's Creek Beef
- Koallah Farm Beef & Lamb
- Kuche Inspirational Food
- Lush Desserts
- Mama's Gozleme
- Melbourne Wholesale Fruit, Vegetable and Flower Market
- Mount Alexander Winery
- Murray Valley Citrus Board

- Otway Estate – Winery & Brewery
- Paella Pan
- Parks Victoria
- Parrette Eel Company
- Pepper & Salt Calamari
- Plunkett Fowles
- Pud for all Seasons
- Pukara Estate
- Pyramid BBQ
- Rainbows Icecream
- Rebello Wines
- Red Duck Brewery
- Salute Oliva
- Sangria Shack
- Schulz Organics
- Scotch Corner Butcher
- Shadowfax Winery
- Swags for Homeless
- Taste of the Orient
- The Sausologist
- Timboon Fine Ice Cream
- Timboon Railway Shed Distillery
- Tooborac Hotel & Brewery
- Toombullup North Winery
- Tourism Macedon Ranges
- Victorian Cherry Association
- Victorian Strawberries
- Vietnamese Food House
- Wagners German Sausages
- Wildings
- Wood Park Wines
- WorkHealth
- www.herbs2home.com.au
- Wyndham City

Why not organise a group of friends for your end of year get-together?

